

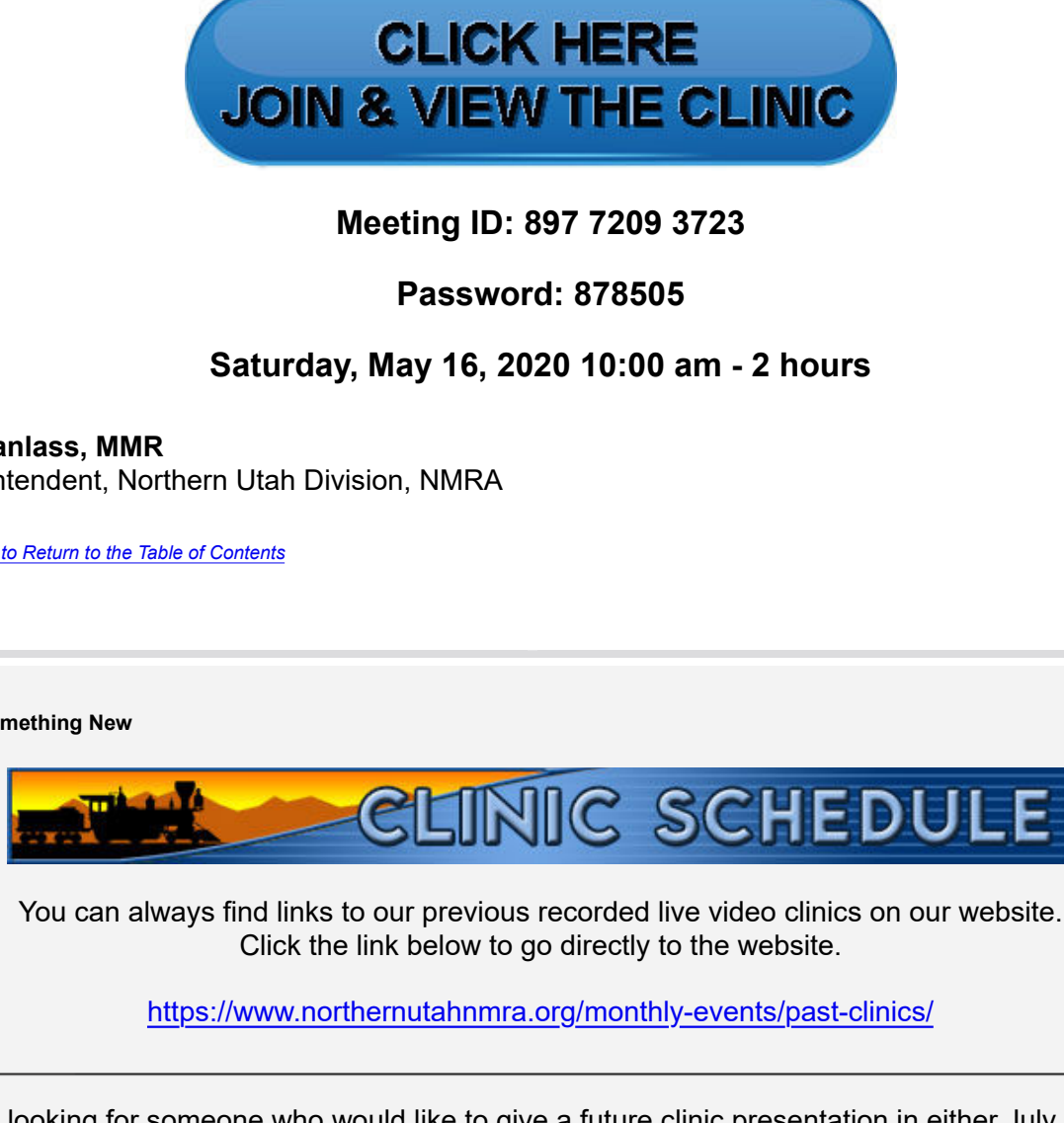
June - Volume 8 - Issue 6

In This Issue [\(Click title to read the article\)](#)

[Coronavirus Update](#)  
[Clinic Schedule](#)  
[Thoughts from the Superintendent](#)  
[What Happened Last Month](#)  
[Doing Your Homework](#)  
[NMRA Virtual Convention](#)  
[Achievement Program](#)  
[Division News](#)

[2022 NMRA National Convention](#)  
[Newsletter Archive](#)  
[Notes from Golden Spike Train Club](#)  
[Notes from South Weber Club](#)  
[NMRA Membership Renewal](#)  
[The Club Car](#)  
[Division Officers and Volunteers](#)

#### Coronavirus Update



The June Monthly Event at the Redwood Recreation Center will be cancelled!

Current restrictions due to the Coronavirus pandemic have obviously disrupted our club activities, including our regular meeting and clinics, as well as the Pizza Box program. We are setting up a Webex solution that will allow us to maintain meetings and clinics while we wait for the current crisis. We anticipate that even after the crisis is past and we resume regular physical meetings, we may decide to maintain the on-line meeting infrastructure because that will allow us to record our meetings. Members who cannot attend would then have the opportunity to view the recordings at a later date.

This clinic will be broadcast on our NEW private Zoom channel. Please click the blue button below on Saturday to view the clinic. Follow the on-line instructions if you have not attended a Zoom meeting before.

[CLICK HERE JOIN & VIEW THE CLINIC](#)

Meeting ID: 897 7209 3723

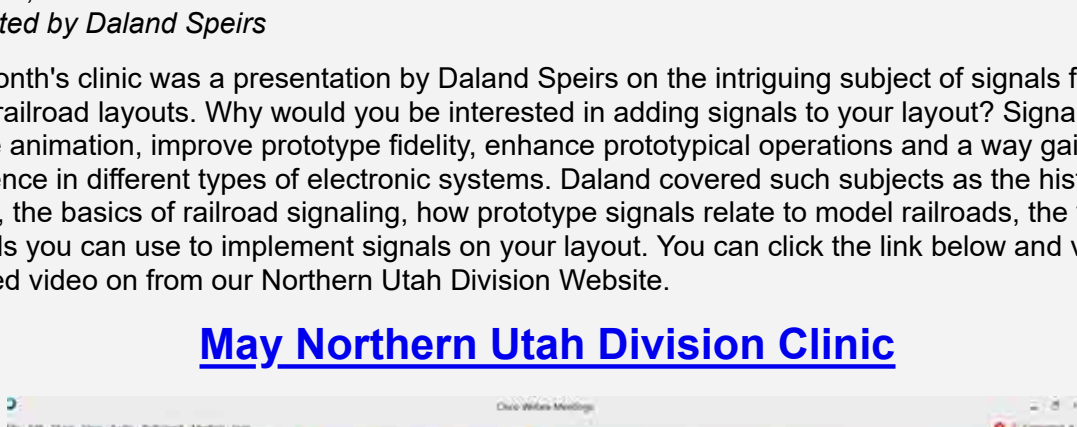
Password: 878505

Saturday, May 16, 2020 10:00 am - 2 hours

**Jim Wanlass, MMR**  
Superintendent, Northern Utah Division, NMRA

[Click Here to Return to the Table of Contents](#)

#### Learn Something New



You can always find links to our previous recorded live video clinics on our website. Click the link below to go directly to the website.

<https://www.northernutahnrmra.org/monthly-events/past-clinics/>

We are looking for someone who would like to give a future clinic presentation in either July or August. This is great way to earn Achievement Points towards your Master Model Railroad Certification and fabulous way to pass along any great information you have about our hobby!



The Northern Utah Division is currently in need of clinic coordinator to help find willing people to present clinics at our Monthly Events. If your interested please contact Jim Wanlass at [jameswotrains@gmail.com](mailto:jameswotrains@gmail.com) for more information.

#### Live On-line Presentation

**20th**  
**10:00 AM - Noon**  
**Backdrop Painting**  
By Kevin Anderson

Learn some tips and tricks for creating successful backdrops from a "Non-Artist".

[Click Here to Return to the Table of Contents](#)

#### Thoughts from the Superintendent



With restrictions easing a bit some groups are starting to meet together again in small numbers. A few of us have gotten together to work on HO Free-mo modules. This is something I have wanted to do for a while now and I am having fun. Mine is coming along nicely. It's fun to work with a group and look forward to connecting all the modules next month and running some long trains!



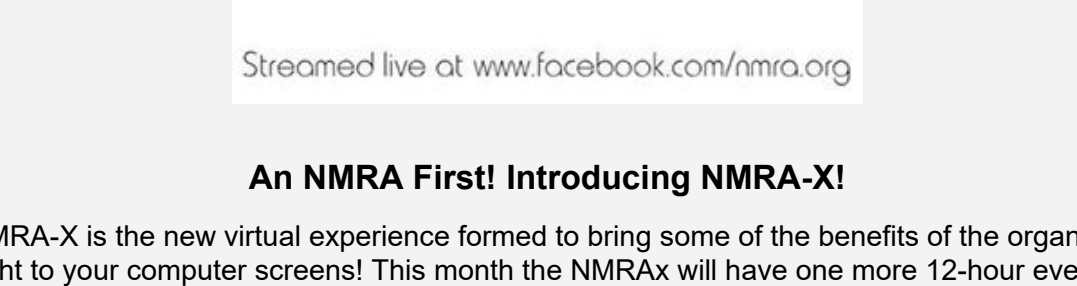
As for the Division, we are still meeting virtually. I am looking forward to the upcoming clinic. Kevin Anderson will be giving a clinic on painting backdrops for beginners. We have had some good backdrop painting clinics in the past but this presentation will be from someone who does not consider himself an artist. We all have a bit of an artist inside us but I believe many of us are a little apprehensive about painting a scene. I know he has prepared well for this on-line presentation so I hope we can all log on live. We plan to record it so it can be referenced later.

Just before the clinic I would like to have a brief "show and tell" from others on the call. I know sometimes it's hard to bring what you are working on at home to our meetings but since the meeting is literally in all of our homes, it should be easy to show what you are currently working on. I'm not going to force anyone to share, but I would like to see what you are working on and that way we can enjoy the journey together!

**Jim Wanlass, MMR #585**  
Superintendent  
Northern Utah Division of the NMRA  
[jameswotrains@gmail.com](mailto:jameswotrains@gmail.com)

[Click Here to Return to the Table of Contents](#)

#### What Happened Last Month



##### Model Railroad Signaling

What it is, how it works and how it relates to model railroads

Last month's clinic was a presentation by Daland Speirs on the intriguing subject of signals for model railroad layouts. Why would you be interested in adding signals to your layout? Signals can provide animation, improve prototype fidelity, enhance prototypical operations and a way gain experience in different types of electronic systems. Daland covered such subjects as the history of signals, the basics of railroad signaling, how prototype signals relate to model railroads, and the various methods you can use to implement signals on your layout. You can click the link below and view the recorded video from our Northern Utah Division Website.

[May Northern Utah Division Clinic](#)



##### Model Railroad Signaling

Part 1 - What it is, how it works and how it relates to model railroads

Presented by Daland Speirs

##### Model Railroad Signaling

Why?

- Animation
- Improve prototype fidelity and
- Create or enhance prototypical operations
- Gain experience in electronics, computers and logic based systems

##### Model Railroad Signaling

Why?

- Animation
- Improve prototype fidelity and
- Create or enhance prototypical operations
- Gain experience in electronics, computers and logic based systems

##### Model Railroad Signaling

Implementation

- Implementation
- First Order - Turnout point position

##### Model Railroad Signaling

Implementation

- Rules of the road...
- Track authority
- Types of authority
- Paper / railroad / verbal forms of authority
- TWC - Time and Train Control
- TTTO - Time Table and Train Order
- CTC - Centralized Traffic Control
- Signal authority

##### Model Railroad Signaling

Signal disciplines

- Centralized Traffic Control (CTC)

##### Model Railroad Signaling

Implementation

- Signal disciplines
- Centralized Traffic Control (CTC)

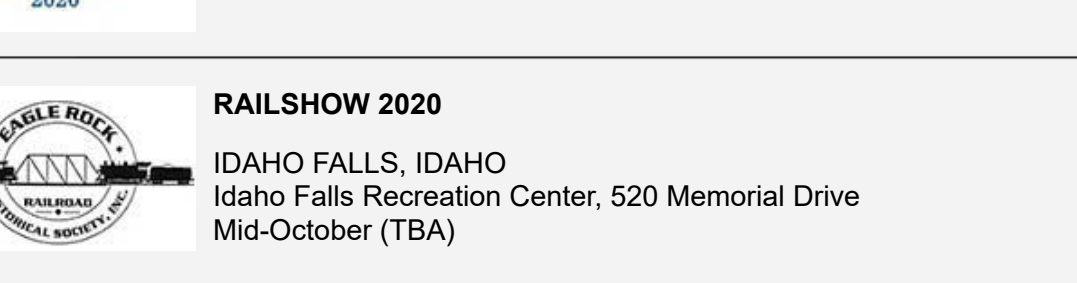
##### Model Railroad Signaling

Signals - Wiring signals and what to plan for

- Signals - Wiring signals and what to plan for

[Click Here to Return to the Table of Contents](#)

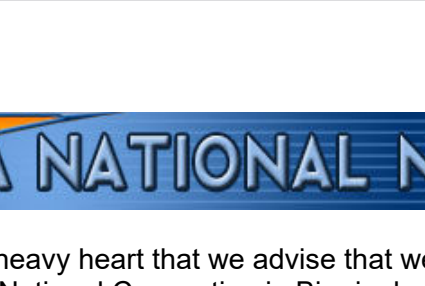
#### Doing Your Homework



**Doing Your Homework**  
By Kevin Anderson

Whether you are freelancing or following a prototype, you must still set the setting. This is where your research comes in. Now when I say research one does not need to start panicking. We live in an age where information is at our fingertips. There are many avenues we as modelers can take to gain the needed knowledge we lack. Here is a list:

- Internet
- Google Earth
- Libraries
- Historical societies
- Museums
- Location Visits
- Interviews
- Travel bureaus



I will touch briefly on all of these. First the Internet is our friend. From google to all the organization websites listed we can gain a wealth of knowledge. Also if we cannot find that what we need on a general search we can always use email. Most organizations will quickly respond to a request for information. Google as well as other search engines have an abundance of photographs posted by different entities that are available to peruse.

Google Earth is a great tool if you cannot visit a location due to distance or other reasons. We can use street view to see what the area looks like, take screen shots to use for backdrops, structures, or for future reference. Satellite views can give us what structures look like from above. A great tool for adding roof details, seeing the footprint, or identifying what other types of scenery elements are around the building.

Libraries are a great resource. While not all now have an online presence. But a physical visit might be required. The wealth of knowledge a library contains is in their collections of books, periodicals, photographs, videos, etc. If your local library doesn't have a book you're looking for they may for a fee, take you to an interlibrary loan. My local library did this for me so I could get some information from a set of rather expensive books that I didn't want to purchase. I found in doing the research for a current project the University of Utah Marriott Library has an extensive online photo collection. The Library of Congress is also another great tool. I found some unexpected information listed on their website as well.

When modeling a prototype there is usually a historical society associated with it. Check their website and send questions via email. They usually respond quickly. I contacted the Western Pacific Historical Society located in Portola, CA and they put me on the trail of a book that I ended up purchasing. Museums are a great source for information. Usually the museum website will have a small amount of information available on it but always have a contact page. The Curator is always going to be happy to answer questions. I even had one send me photos from their collection. If it is possible plan a day to visit the museum. Seeing up close items will help to give you as a modeled ideas and an overall idea what you're getting yourself into. They also have displays, digital collections, books that are available to the public. I visited one museum twice and was able to get my questions answered. I have a third visit planned for mid summer where I will be taking a guided tour. When visiting be sure to have a pencil, pad of paper, camera, extra batteries for the camera, SD cards, and a list of questions you want answered. The museum usually has a gift shop. Walk through, I found a wealth of information on sale and made a couple of purchases. Not only will you get your info but the money goes to a good cause. The museum displays.

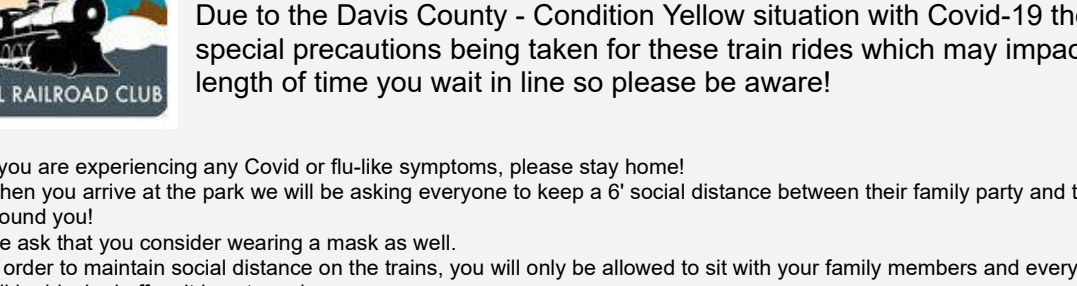
If you are modeling a location and need scenery or backdrop ideas, visiting the location will help. Take lots of photos. You may find things you weren't expecting to and would make a great scenic element whether structures or landscape formations. Sometimes with a historical area you may find interesting the locals will give you great information on the history of the area. A great tool for adding roof details, seeing the footprint, or identifying what other types of scenery elements are around the building.

Sometimes travel bureaus can offer needed information. Such as how wide is a river, or brief histories and photos of the area in question, as well as maps. An email goes a long way. Also the information can help point you in the right direction when making a project plan.

I hope that this article has helped to spark the interest in researching. It can be as much fun as actually doing the modeling.

[Click Here to Return to the Table of Contents](#)

#### NMRA-X Virtual Convention



Streamed live at [www.facebook.com/nmra.org](http://www.facebook.com/nmra.org)

**An NMRA First! Introducing NMRA-X!**

The NMRA-X is the new virtual experience formed to bring some of the benefits of the organization live, right to your computer screens! This month the NMRA-X will have one more 12-hour event consisting of clinics and tours in June; this will be held on June 20th from 7:30am - 8:00pm EDT. There is also a June "Ask the MMR" session on June 20th from 7:30am - 8:00pm EDT.

Also, don't miss the Gateway/X, our first-ever NMRA-X Virtual National Convention - a week-long event running every day from 8:00am EDT to 11:00pm EDT starting on July 12th and ending on July 18th.

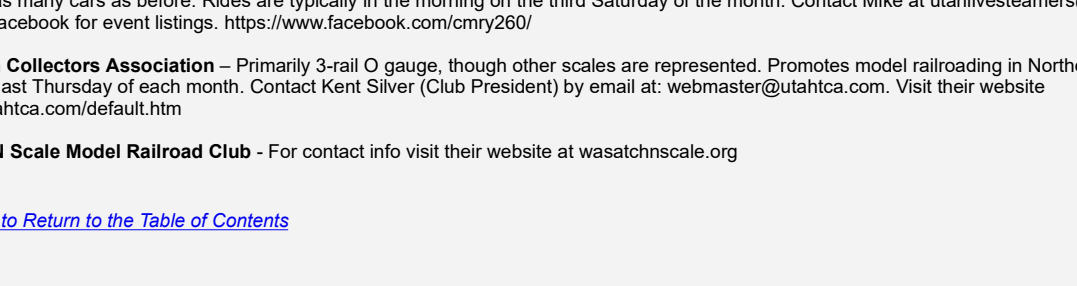
All events are broadcasted through the NMRA Facebook page and group, and the NMRA YouTube channel. (Past events can be found on the YouTube channel.)

#### Links:

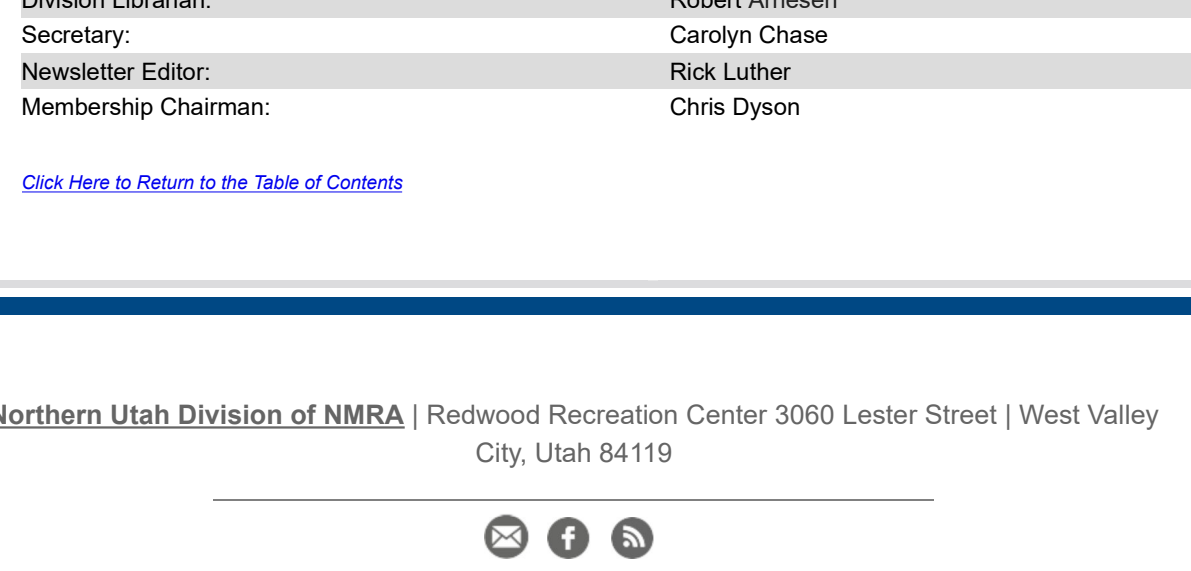
[NMRA Facebook page](#)  
[NMRA Facebook group](#)  
[NMRA YouTube Channel](#)

[Click Here to Return to the Table of Contents](#)

#### Achievement Program



I know that a few months ago I talked about Paul Dishman earning his Golden Spike Award. Well, I had planned on waiting until we started meeting again in person but I could tell he was a little anxious to receive it, understandably so. I knew I was excited to get mine as well submitting the paperwork to it. We both live in Utah County so it was convenient for us to meet at the Hobby Stop so I could present it to him. Later, on Facebook, he posted the picture showing him holding it surrounded by his layout.



Even though we are not meeting in person yet, for your Golden Spike I can do a FaceTime or Zoom with you to see your work. For more advanced "sign-offs" we can try to schedule to meet somewhere, even at your home, depending on your situation. I know a few of you are working on items for AP advancement. Things in general might have slowed down but you can continue working on the AP. Even if I'm not there to sign off, there are no deadlines (only self imposed ones which can help you but that's up to you) so you can continue working on your AP items. Even if you aren't working toward your AP we can be inspired by each other so share what you are doing and we can enjoy the journey together!

**Jim Wanlass, MMR #585**  
AP Chairman  
Northern Utah Division of the NMRA  
[jameswotrains@gmail.com](mailto:jameswotrains@gmail.com)

[Click Here to Return to the Table of Contents](#)

#### Division News Items



##### Congratulations to Lowell Didas!

Our very own Lowell has been elected to become the new President of the NMRA Rocky Mountain Region! Lowell has filled many different positions in the Northern Utah Division including Clinics Chairman, Membership Chairman, Board of Directors and Assistant Superintendent. Replacing Lowell as Assistant Superintendent will be Daland Speirs.

#### HO Free-mo

The local HO Free-mo will be meeting in Evanston, Wyoming this July but will be limited to the number of people who can attend. For more information contact Mike Nelson at [j\\_m\\_nelson@gmail.com](mailto:j_m_nelson@gmail.com)

#### Upcoming Shows and Events

Please note that as of this writing some of the following shows and conventions are scheduled but maybe postponed or canceled depending on the current status of the Coronavirus pandemic. Check the show websites for confirmation.



##### CANCELLED - 2020 Sherman Hill Train Show

Saturday, May 16, 9am - 5pm  
Sunday, May 17, 10am - 4pm  
Frontier Park Exhibition Hall  
1312 W. 8th Ave.  
Cheyenne, WY 82001  
<http://shermanhillrails.org/show>



##### CANCELLED - Gateway 2020

2020 NMRA National Convention and National Train Show  
July 12-18 in St. Louis, Missouri  
<https://www.gateway2020.org/>



##### Rocky Mountain Region

Joint Lines to Pueblo  
July 31 - August 2, 2020  
Pueblo Union Station - 132 West B Street  
Rawlins Public Library - 100 E Abriendo Ave  
Pueblo, Colorado



##### CANCELLED - 23rd Annual Roundhouse Festival

August 7, 8 & 9 - Evanston Show  
1440 Main St. Evanston, Wyoming



##### CANCELLED 40th National Narrow Gauge Convention

St. Louis, Missouri  
September 2-5, 2020  
Embassy Suites by Hilton St. Louis - St. Charles  
2 Convention Center Plaza, Saint Charles, Missouri, 63303  
<https://40thnrgc.com/>



##### RAILSHOW 2020

IDAHO FALLS, IDAHO  
Idaho Falls Recreation Center, 520 Memorial Drive  
Mid-October (TBA)



##### CANCELLED Intermountain Train Expo

Northern Utah Division  
November 13 & 14th  
Redwood Recreation Center  
3060 Lester Street West Valley City

[Click Here to Return to the Table of Contents](#)

#### 2022 NMRA National Convention



It was with a heavy heart that we advise that we can no longer run the NMRA National Convention in Birmingham UK in 2022.

Birmingham City bid successfully to host the Commonwealth Games (similar in scope to the Olympics but for British Commonwealth nations only) in the Summer of 2022 after Dublin, South Africa withdrew as host city. This occurred sometime after our own bid to host the NMRA National Convention was successful. As a consequence of that we moved our dates back two weeks to accommodate.

Now, as a consequence of the Olympic Games being postponed one year into 2021 due to COVID-19, and the World Athletics Games in Eugene Oregon being postponed one year to the early Summer of 2022, along with the European Athletics Championships in Germany, the Commonwealth Games are now beginning to plan venues and accordingly to be in the Summer for a number of reasons ranging from the Commonwealth Games dates might change officially. This the official will put a strain on booking accommodation and meeting rooms, and will likely impact the prices to be charged.

Furthermore, our train show location, which is scheduled to play host to a number of indoor sports during the Commonwealth Games, has now confirmed that they cannot guarantee that the venue will be back in a useable condition following the Games, in time for the Convention to run at all in the summer. The National Convention needs to be in the Summer for a number of reasons ranging from availability of accommodation in a city location, to traffic conditions and heritage railways timetables which are geared to the holiday periods.

There is also the added concern that travel, particularly international air travel, and hotel availability might not have returned to its pre-COVID-19 levels putting extra strain on our planning.

We apologise to all those who we know were either looking forward to participating as exhibitors or convention attendees and who were planning trips to the UK around the Convention.

Birmingham 2022 Convention Committee

[Click Here to Return to the Table of Contents](#)

#### Newsletter Archive



Catch up on all the past issues of the Division Newsletter the "Promontory Post" on the division website. There is a multitude of information about our past clinics, from layout tours, conventions, train shows, links to interesting information and the chance to get to know our fellow members. Just click the button below and learn more!

[CLICK HERE TO READ PAST NEWSLETTERS](#)

[Click Here to Return to the Table of Contents](#)

#### Golden Spike Train Club of Utah



Due to some earthquake damage as well as the Coronavirus, we are closed indefinitely. No more open houses for the time being. Stay tuned. Thanks to all who have come to visit. Feel free to message us.

Visit our website at <http://www.goldenspikeclubutah.org/>

Like us on facebook at <https://www.facebook.com/GoldenspikeTrainClub/>

[Click Here to Return to the Table of Contents](#)

#### South Weber Club Model Railroad Club



Join us at Canyon Meadows Park (631 E Petersen Pkwy, South Weber, Utah) June 20th for train rides around the park once again!

Due to the Davis County - Condition Yellow situation with Covid-19 there are special precautions being taken for these train rides which may impact the length of time you wait in line so please be aware!

- If you are experiencing any Covid or flu-like symptoms, please stay home!
- When you arrive at the park we will be asking everyone to keep a 6' social distance between their family party and the others around you.
- Ask what you consider wearing a mask as well.
- In order to maintain social distance on the trains, you will only be allowed to sit with your family members and every other car will be blocked off so it is not used.
- The cars will be wiped down with a bleach solution after every passenger load to help protect them.

These precautions are being done to comply with Condition Yellow guidelines and to help protect them. But please mean that we will be running at basically half of our usual capacity, so please be prepared to wait in line longer than normal! Bring sunscreen, hats, and water!

As always, the train rides are free but donations are greatly appreciated to maintain the trains and expand the track. Especially this year we need donations in the form of donations for our insurance next year! Bring your friends and family and be ready for fun!

Visit our website at <http://southwebermodelrrclub.com/>

Visit our Facebook page at <https://www.facebook.com/SouthWeberRailroad/>

[Click Here to Return to the Table of Contents](#)

#### NMRA Membership Renewal



Just a reminder for everyone to check their expiration date on membership NMRA cards. Please don't let them lapse! You should receive a membership renewal form in the mail months before your expiration. If you can't find it or didn't get it, you can always go on-line and renew there. Below is the link to NMRA website page.

<https://nmra.org/membership-application-and-renewal>

Also check NMRA home page for membership discounts through the NMRA Partnership Program. You can get discounts at over 30 vendors including Micro-Mart, Green Frog Productions, Minuteman Scale Models, Motrak Models, MRC (Model Rectifier Corporation) and many others. The discounts could add up to what a years membership costs!

<https://nmra.org/partnerships>

[Click Here to Return to the Table of Contents](#)

#### The Club Car



The Northern Utah Division is home to many outstanding modeling clubs, in every scale from Z to Live Steam. You are sure to find at least one of them that will meet your needs, so drop them a line and join the fun!

Contact information is the most recent we have on file. If you have a railroad modeling club in the state of Utah, we would be happy to include your information here. Just send us the name of your club, the scales you represent in your club, and how prospective members may contact your club.

**Color Country Model Railroad Club** - This multi-scale club is located in the Southern Utah Division in St. George, Utah. Contact Dave Merrill by email at [professorcolorcountry@gmail.com](mailto:professorcolorcountry@gmail.com). Visit their website at <http://colorcountrytrains.org/>

**Color Country Tri-Track Club** - This N scale club, located in the Southern Utah Division in St. George, Utah, uses the Tri-Track modular system. Contact the club by email at [colorcountrytrains@gmail.com](mailto:colorcountrytrains@gmail.com). Visit their website at <http://www.cctc.info>

**Golden Spike American Flyer Train Club** - This S scale club meets the third Friday of each month at Canyon Meadows Park. Their newsletter contains the time and place. Call Jim Hocking by phone at: (801) 252-1921 or by email at [jameshocking7@outlook.com](mailto:jameshocking7@outlook.com). Visit their website at <http://www.gstcclubutah.org>

**Golden Spike Train Club of Utah** - This HO/N3 100% NMRA club meets Saturday Evenings from 3:00 pm to 6:00 pm, at the Old Children's Museum of Utah (800 N 300 West, SLC). Open houses are held on the 2nd Saturday of the month from 12:00 pm to 2:00 pm. Contact Mark Forslund by phone at (801) 448-6086 for more information. Out of the area memberships are available. Visit their website at <http://www.goldenspikeclubutah.org>

**Great Basin Lego Train Club** - Adult fans of LEGO. Meeting times and club info is posted on their website. Contact Reed Cowan by email at [h3t3bz@aol.com](mailto:h3t3bz@aol.com)

**HO3 Club of Northern Utah** - Specializing in local narrow gauge railroads in HO3, this group meets informally and has a layout in Grantsville. Contact Fred Lippard by email at [fred.lippard@gmail.com](mailto:fred.lippard@gmail.com)

**Hosters Model Railroad Club** - This multi-scale club, including live steam, meets the 3rd Wednesday of every month at Ogden's historic Union Station. Contact Mike Murphy by USPS mail at: 752 W 4375 South, Riverton, UT 84403 or by phone at: (801) 394-4952. Visit their website at <http://hosters.org>

**O Scale Trains** - An HO and O3 scale